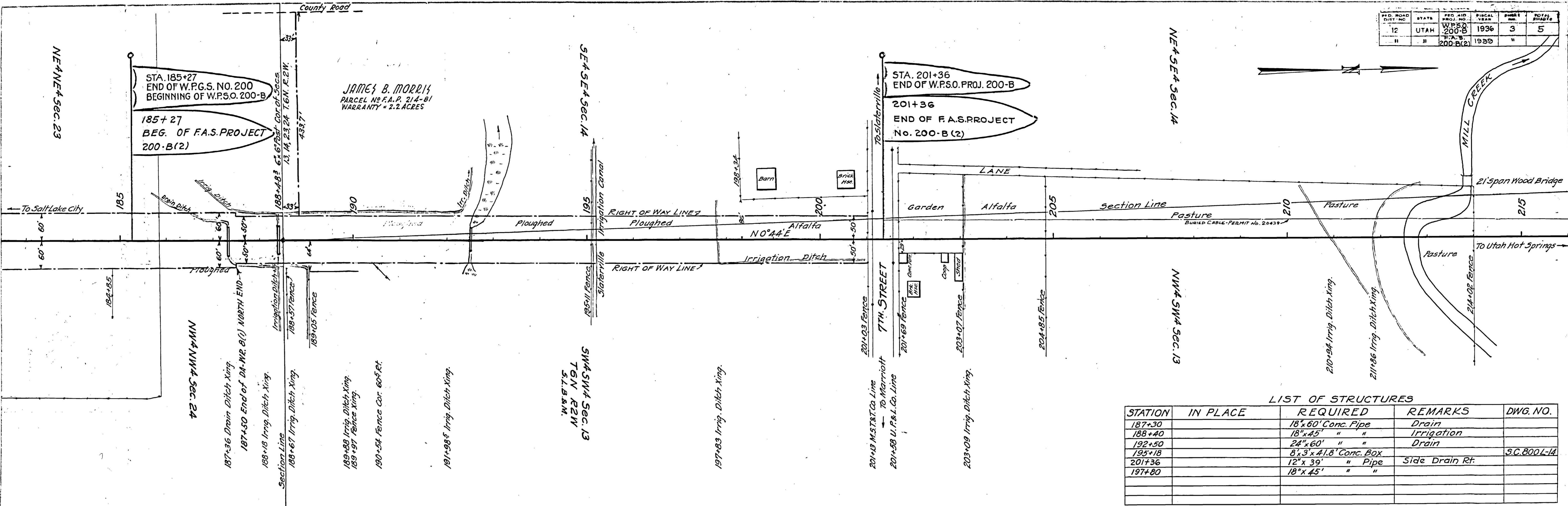


PLANNED DIST. NO.	STATE	FED. AID PROJ. NO.	FISCAL YEAR	SHEET NO.	TOTAL SHEETS
12	UTAH	W.P.S.O. 200-B	1936	3	5
"	"	F.A.S. 200-B(2)	1939	"	"

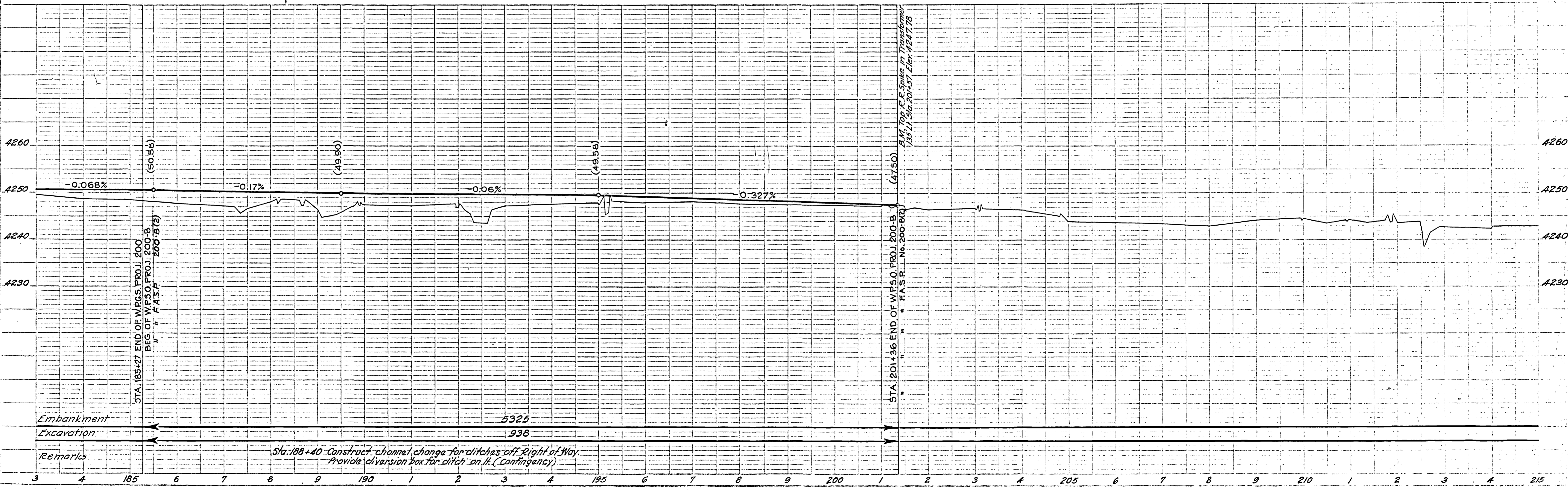
DATE	1937
BY	A. Carothers
REVISION	1937
BY	G.S. Stevenson
DATE	1937
BY	G.S. Stevenson
DATE	1937
BY	G.S. Stevenson



**LIST OF STRUCTURES**

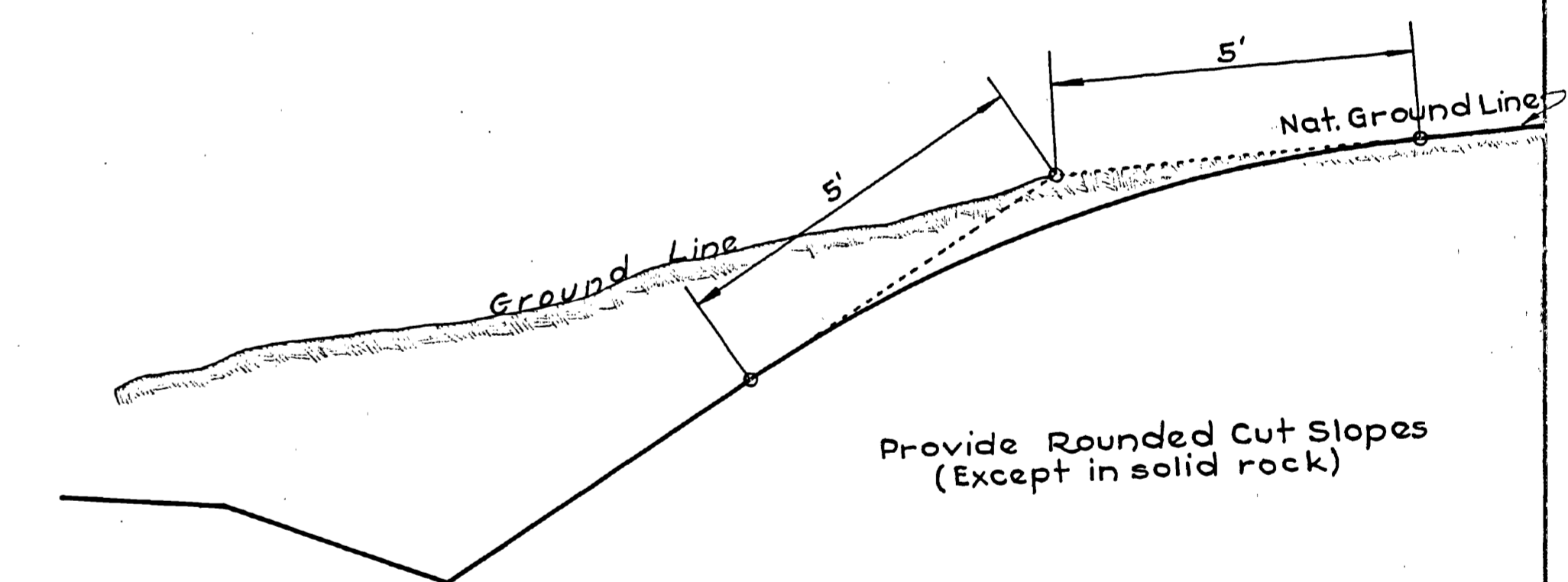
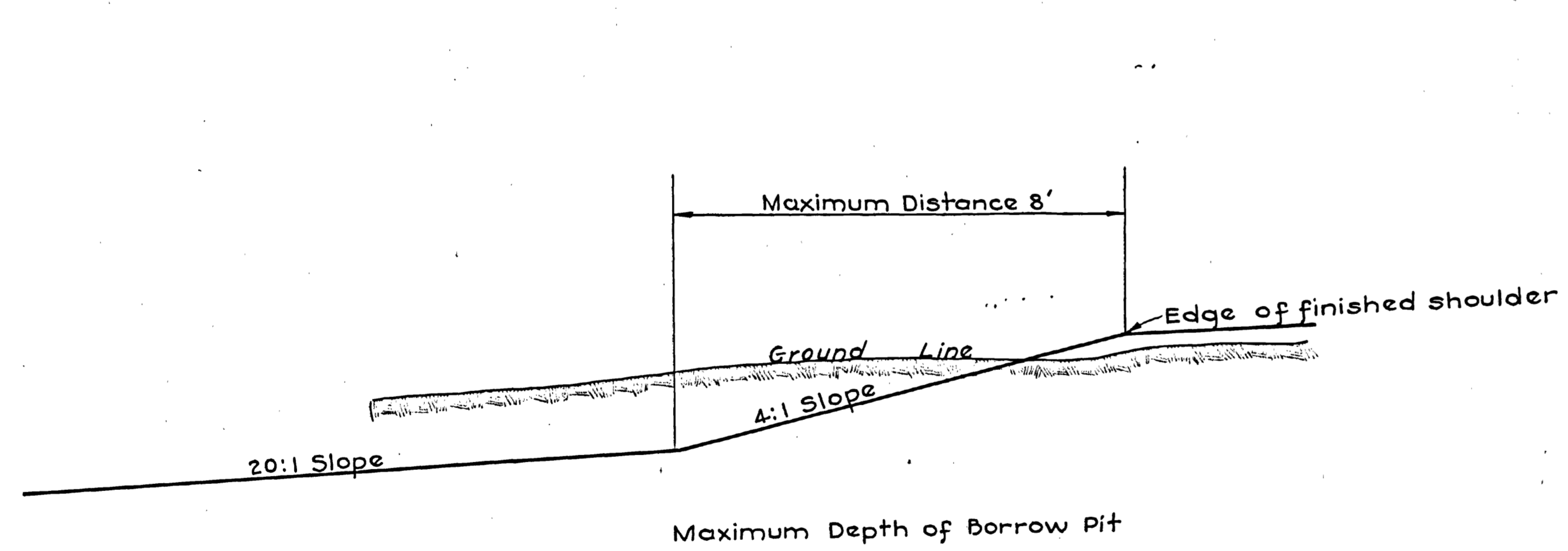
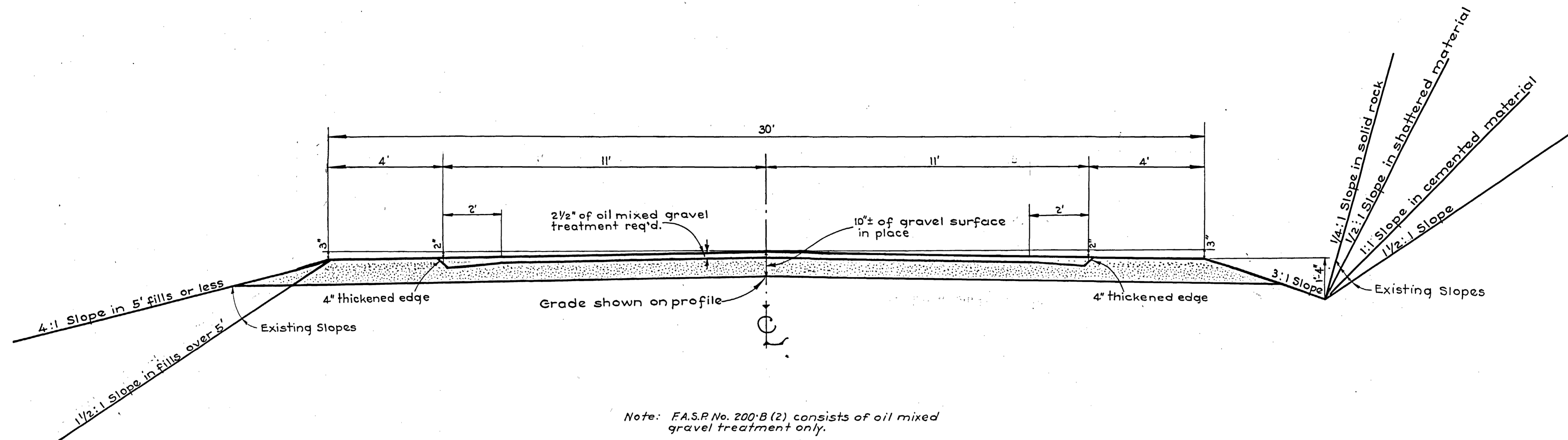
STATION	IN PLACE	REQUIRED	REMARKS	DWG. NO.
187+30		18" x 60' Conc. Pipe	Drain	
188+40		18" x 45' " "	Irrigation	
192+50		24" x 60' " "	Drain	
195+18		8' x 3' x 4.8' Conc. Box		S.C. 800L-14
201+36		12" x 39' " Pipe	Side Drain Rt.	
197+80		18" x 45' " "		

DATE	1937
BY	A. Carothers
REVISION	1937
BY	G.S. Stevenson
DATE	1937
BY	G.S. Stevenson
DATE	1937
BY	G.S. Stevenson



# TYPICAL CROSS SECTION

FED. ROAD DIST. NO.	STATE	W.B.S.D. PROJ. NO.	FISCAL YEAR	SHEET NO.	TOTAL SHEETS
12	UTAH	200B	1936	2	5
II	II	200B(2)	1939	2	2



Revised for oil 7-13-38

UTAH STATE ROAD COMMISSION  
SALT LAKE CITY - UTAH  
E.C. KNOWLTON - CHIEF ENGINEER

- TYPE -

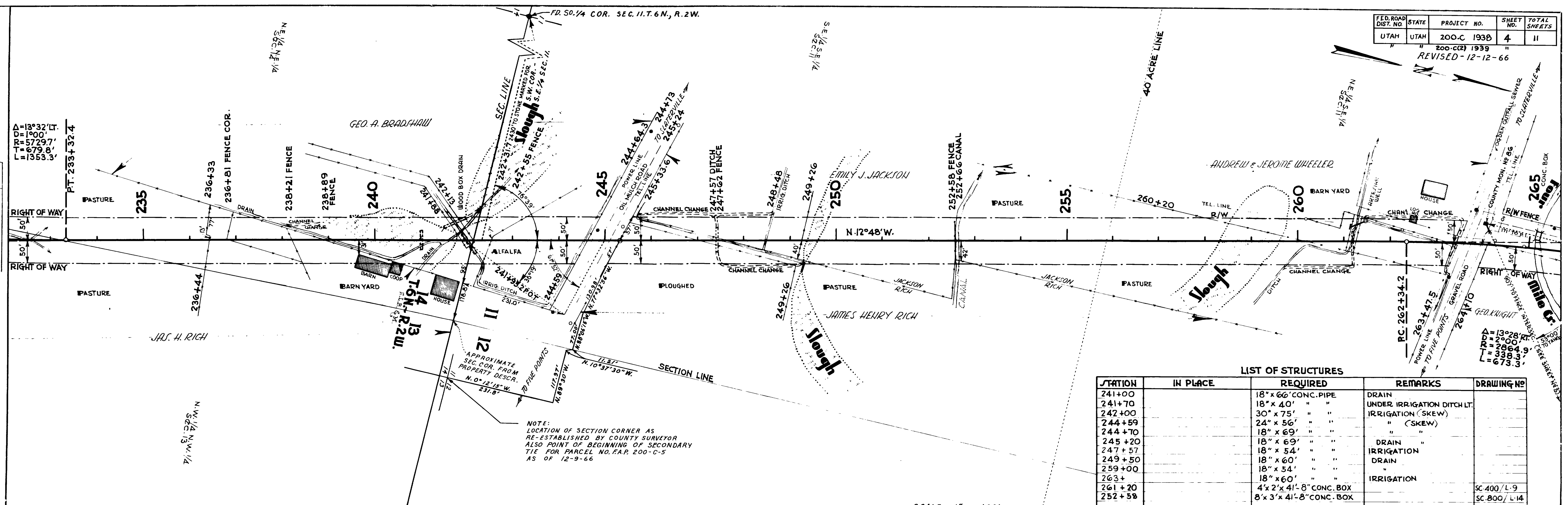
10" x 30' GRAVEL ROADWAY  
2 1/2" x 22' OF OIL MIXED GRAVEL

FED. ROAD DIST. NO.	STATE	PROJECT NO.	SHEET NO.	TOTAL SHEETS
UTAH	UTAH	200-C 193B	4	11

REVISED - 12-12-66

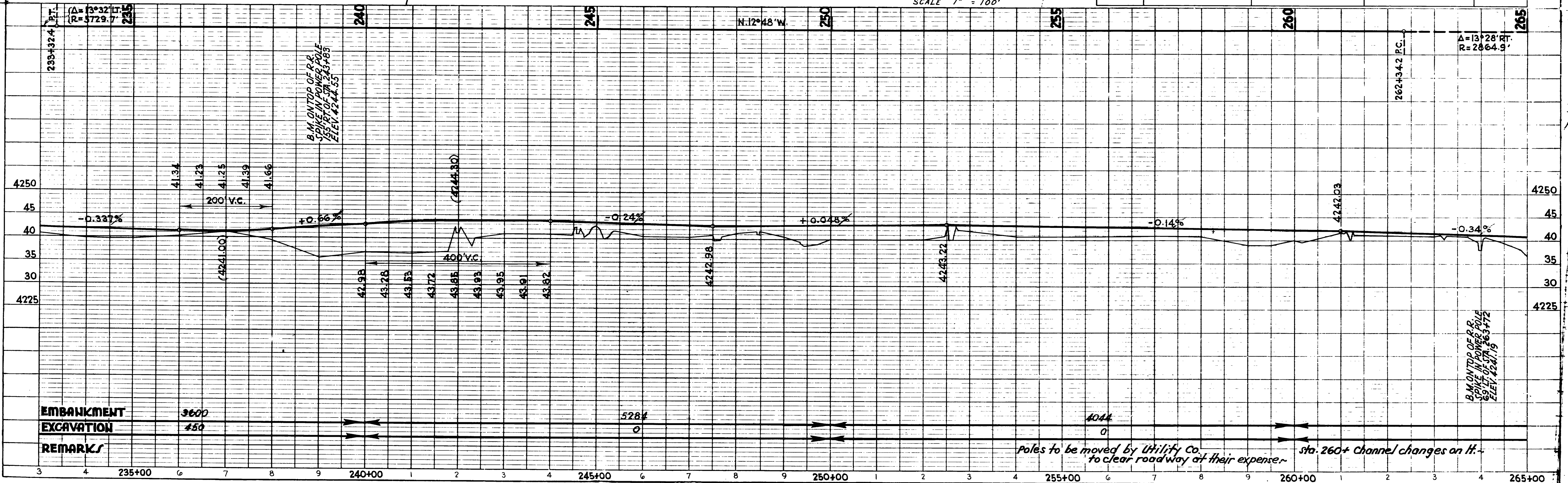
DATE	BY
1935	J. L. KAY
1937	L. E. REED
1937	H. M. FRIEDEL

Project: F.S. 280-C (2)  
 County: 280  
 Route: 280  
 Big Red Post: 44  
 Sheet: 44  
 Sheet Type: 09



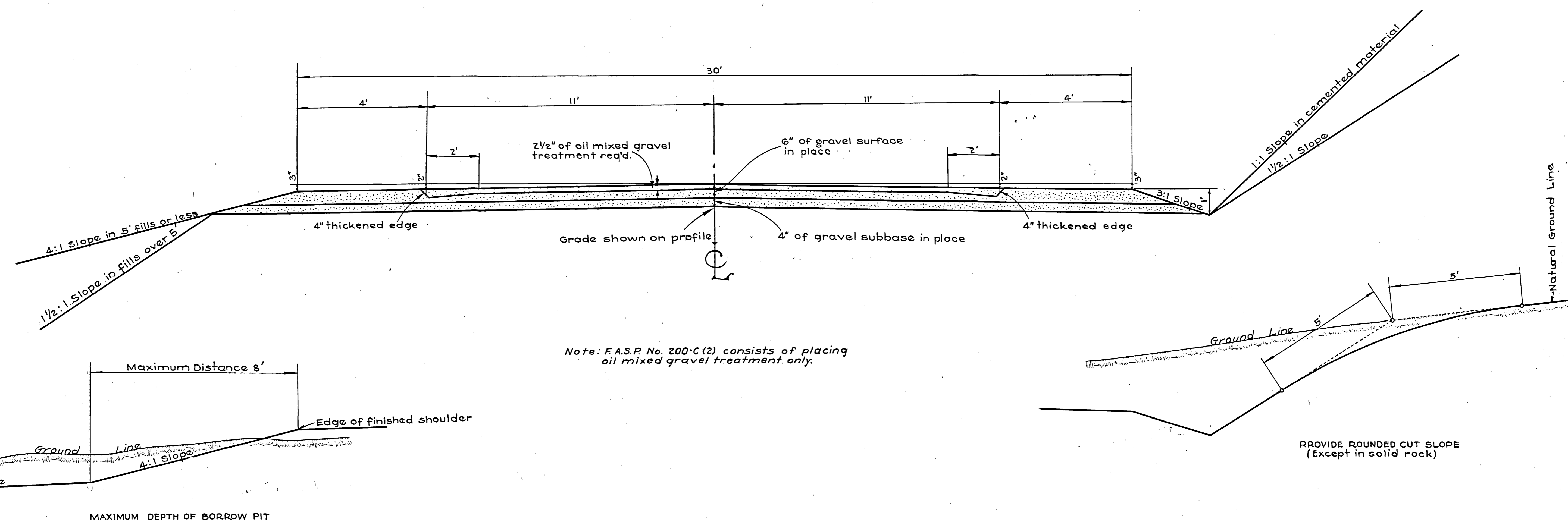
STATION	IN PLACE	REQUIRED	REMARKS	DRAWING NO.
241+00		18" x 66" CONC. PIPE	DRAIN	
241+70		18" x 40' "	UNDER IRRIGATION DITCH LT.	
242+00		30" x 75' "	IRRIGATION (SKEW)	
244+59		24" x 56' "	" (SKEW)	
244+70		18" x 69' "	"	
245+20		18" x 69' "	DRAIN	
247+57		18" x 54' "	IRRIGATION	
249+50		18" x 60' "	DRAIN	
259+00		18" x 54' "	"	
263+		18" x 60' "	IRRIGATION	
261+20		4' x 2' x 41'-8" CONC. BOX		SC. 400 / L-9
252+58		8' x 3' x 41'-8" CONC. BOX		SC. 800 / L-14

DATE	BY
1935	J. L. KAY
1937	H. M. FRIEDEL
1937	L. E. REED
1937	H. M. FRIEDEL



# TYPICAL CROSS SECTION

FED. ROAD DIST. NO.	STATE	F.A.S.P. PROJ. NO.	FISCAL YEAR	SHEET NO.	TOTAL SHEETS
12	UTAH	200-C	1938	2	11
11	"	200-C(2)	1939	2	3



Note: F.A.S.P. No. 200-C(2) consists of placing oil mixed gravel treatment only.

Widen and superelevate curves according to J-343-RS.

Revised for oil 7-13-38

UTAH STATE ROAD COMMISSION  
SALT LAKE CITY - UTAH  
E. C. KNOWLTON - CHIEF ENGINEER

- TYPE -

10' x 30' GRAVEL ROADWAY  
2 1/2" x 22" OIL MIXED GRAVEL

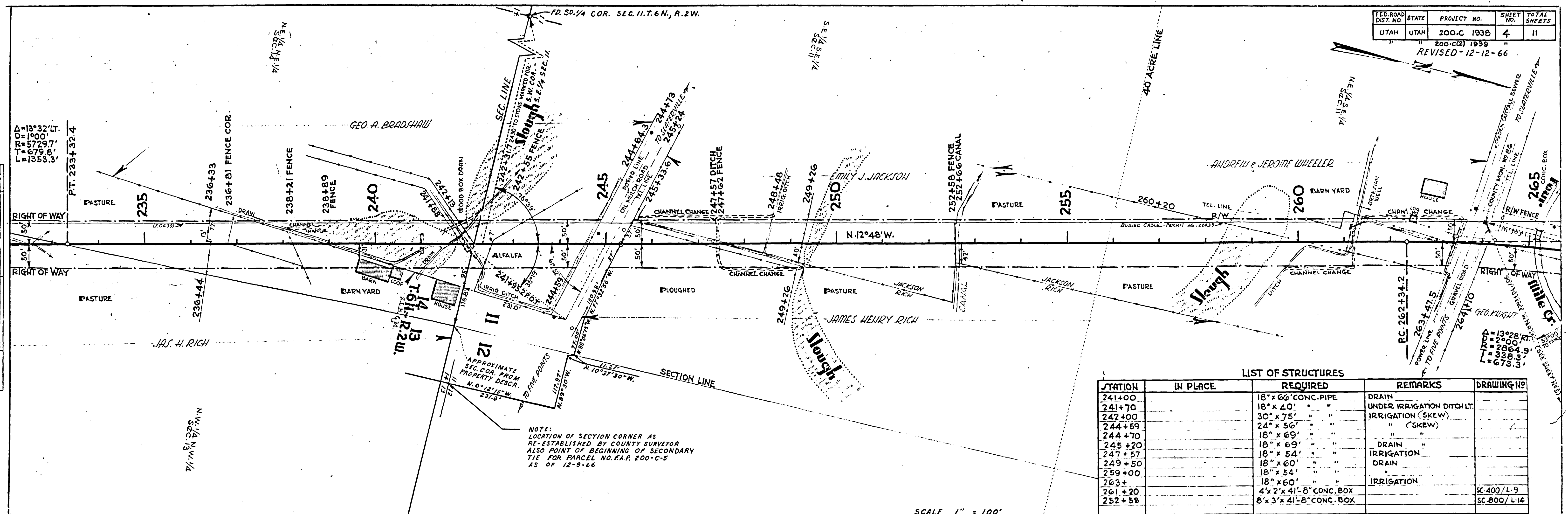


FED. ROAD DIST. NO.	STATE	PROJECT NO.	SHEET NO.	TOTAL SHEETS
UTAH	UTAH	200-C 193B	4	11

200-C(2) 193B  
REVISED-12-12-66

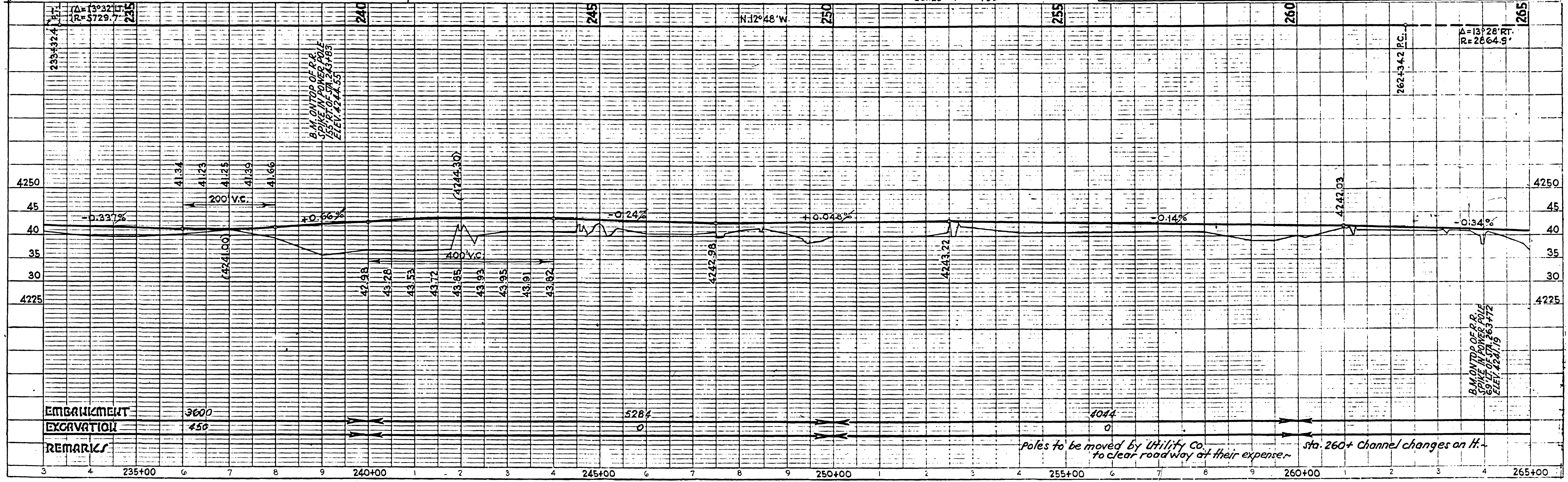
PLAN	DATE	BY
PLANNED	1935	J. E. KAY
NOTED	1937	L. E. KEED
TRACED	1937	H. M. FENMEL

PROFILE	DATE	BY
NOTED	1935	J. E. KAY
TRACED	1937	L. E. KEED
STRUCTURE POINTS CHECKED	1937	H. M. FENMEL



LIST OF STRUCTURES

STATION	IN PLACE	REQUIRED	REMARKS	DRAWING NO.
241+00		18" x 66" CONC. PIPE	DRAIN	
241+70		18" x 40" "	UNDER IRRIGATION DITCH LT.	
242+00		30" x 75" "	IRRIGATION (SKEW)	
244+59		24" x 56" "	" (SKEW)	
244+70		18" x 69" "	"	
245+20		18" x 69" "	DRAIN	
247+57		18" x 54" "	IRRIGATION	
249+50		18" x 60" "	DRAIN	
259+00		18" x 54" "	"	
263+		18" x 60" "	IRRIGATION	
261+20		4' x 2' x 41'-8" CONC. BOX		SC. 400 / L-9
252+58		8' x 3' x 41'-8" CONC. BOX		SC. 800 / L-14



EMBANKMENT 3600  
EXCAVATION 450

Poles to be moved by Utility Co. to clear roadway at their expense - sta. 260+ Channel changes on H.



